



RACE PRO SINGLE ROW RADIATORS

When you're going for speed, every pound on the vehicle matters. When your racing application requires effective cooling at the lowest possible weight, look no further than Northern's new Race Pro Single Row Radiators. The larger tube width creates greater surface area and tube-to-fin contact, which when combined with the single row design, delivers robust cooling capacity in a lightweight package. Standard overall sizing still allows for a drop-in replacement fit in most applications for easier installation.



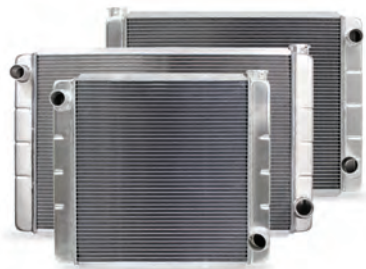
- New single row all-aluminum design delivers effective cooling in a lightweight package
- Double Pass version with 1-5/8" tubes, or Ultra-lightweight Single Pass version with 1-1/4" tubes
- Available in multiple sizes; 1-3/4" inlet & outlet on all models
- Same quality features you've come to trust from Northern Race Pro Radiators

PART #	RACE PRO RADIATORS	TUBES	WEIGHT
NEW 204140	26" x 19" x 2 1/2", Double Pass Right	1 5/8"	13.05 lb
NEW 204141	28" x 19" x 2 1/2", Double Pass Right	1 5/8"	X.X lb
NEW 204142	24" x 19" x 2 1/4", GM	1 1/4"	9.04 lb
NEW 204143	26" x 19" x 2 1/4", GM	1 1/4"	9.48 lb
NEW 204144	28" x 19" x 2 1/4", GM	1 1/4"	9.9 lb

SINGLE OR DOUBLE PASS RADIATORS

Race Pro Radiators provide up to 24% improvement in heat transfer over other brands of racing radiators! Our louvered cooling fins are exclusively designed for high performance heat dissipation and the core features 2 rows of 1" high-capacity cooling tubes. Choose from single or double pass versions to meet your cooling needs!

- Machined billet aluminum, SAE compliant filler neck
- Epoxy-free construction—nothing to crack, chip, or leak
- All welded construction (no gaskets)
- Extra heavy reinforced die stamped tanks for added rigidity
- Heavy wall inlet and outlet fittings for secure hose connection
- Available with 8 plate cooler for wet or dry sump systems



PART #	RACE PRO RADIATORS	BRUSHLESS FAN SHROUD	ELECTRIC FAN SHROUD	ENGINE DRIVEN SHROUD
SINGLE PASS RADIATORS				
209674	22" x 19" Chevy / GM	— — —	Z40073	Z40020
209679	24" x 19" Chevy / GM	— — —	Z40098, Z40094, Z41035	Z40024
209675	26" x 19" Chevy / GM	Z40151	Z40074, Z40091	Z40021
209676	28" x 19" Chevy / GM	Z40135	Z40002, Z40075	Z40022
209677	31" x 19" Chevy / GM	Z40133	Z40003, Z40076	Z40023
209673	31" x 19" Ford / Mopar	Z40133	Z40003, Z40076	Z40023
DOUBLE PASS RADIATORS				
209633	24" x 19" Double Pass; In/Out on Right	— — —	Z41035, Z40098, Z40094	Z40024
209635	26" x 19" GM Double Pass; In/Out on Right	Z40151	Z40074, Z40091	Z40021
209624	28" x 19" GM Double Pass; In/Out on Right	Z40135	Z40002, Z40075	Z40022
209626	31" x 19" Double Pass; In/Out on Right	Z40133	Z40003, Z40076	Z40023