

HEATER UNIT AH308

Cab heater kit for the 2011-2013 John Deere 825i Gator

FEATURES:

- 3 Speed Hi Output Blower
- 290 CFM Fan Draws 4 Amps
- 2 Fully Adjustable Louvers
- Powder Coated Steel Case
- Motor has 4,000 Hour Brush Life and 3 year warranty

INCLUDES:

- (1) Instructions
- (2) Y Splicers
- (2) 1" Hose Clamps
- (1) $\frac{5}{8}$ " Heat Hose
- (4) $\frac{1}{4}$ " - 20 Bolts
- (2) $\frac{5}{8}$ " Hose Clamps



PRE-INSTALLATION:

For ease of installation you will need to remove the hood and the black molded plastic piece that is under the hood. The black molded piece just snaps into place so you shouldn't have to remove any screws to take it out. Also, if you do not have clamps for when you cut into the radiator lines when installing the Y-Fittings, you will need to drain the radiator.

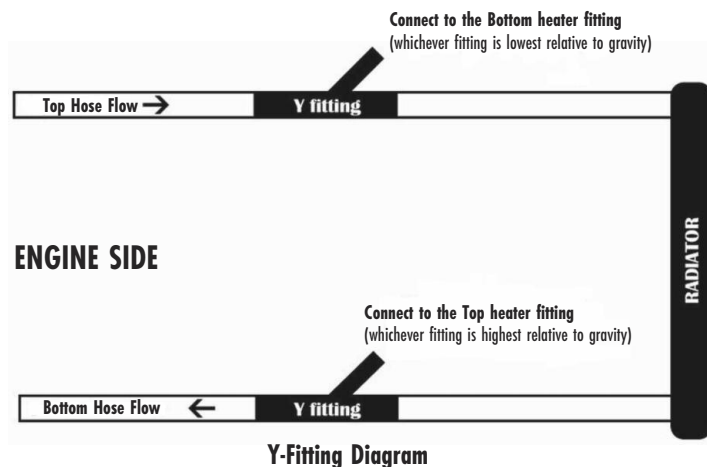


PHOTO 1: Splices



PHOTO 2: Factory Hole

NOTE:

The picture above taken standing in front of the Gator looking down into the radiator compartment.

Now you can attach the heater hose to the splices. There is already a factory hole in the firewall that works for running the hose into the cab. Hose clamp the heater hose to the splice and run through the hole in the firewall. After the hose is run, you can reinstall the radiator. **Do not fill with coolant yet.**

MOUNTING THE HEATER:

Now you need to install the heater. Directly under the dash in the center there is a molded plastic piece that is held in by 4 screws (2 on driver side, 2 on passenger side). Use a 10mm socket and remove them and install the mounting brackets. You will need to use the bolts supplied because they need to be a little bit longer. The driver side bracket is the one that has the offset on it. **SEE PHOTO 3 & 4** to make sure you have them installed correctly.

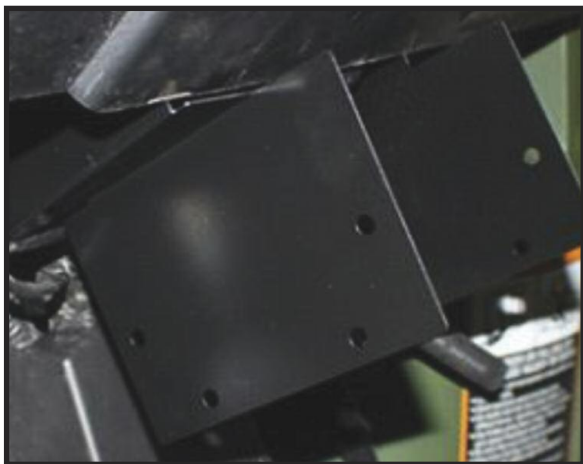


PHOTO 3: Mounting Heater



PHOTO 4: Mounting Heater

Now take the heater and attach the hose to the heater core fittings coming out of the back of the heater. It is easier to do this while the heater is not mounted to the brackets. After the hoses are connected take the heater and slide it between the brackets and line up the hose and mount it with the screws supplied.



PHOTO 5: Mounting Heater

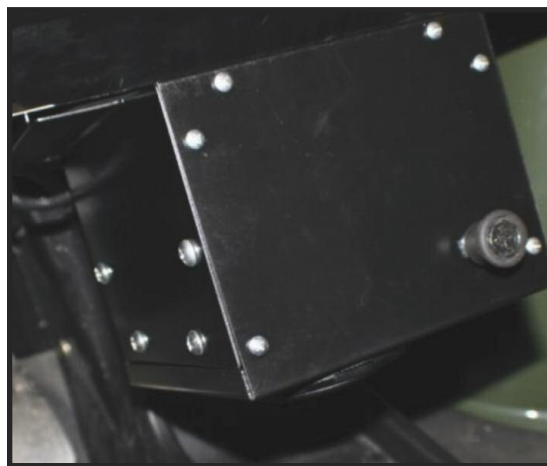


PHOTO 6: Mounting Heater

WIRING:

This is a self-grounded heater, meaning that once it is bolted in, that's what grounds it. There is only one wire needed to hook up to give the fan power. The power wire can be run back up where the heater hose was ran. There is an unused wiring harness under the hood and **SEE PHOTO 7** we plugged the spade into the number "1" slot. You do not have to use this, but you need to wire it into a "keyed" power source, so that there is no power when the key is off.

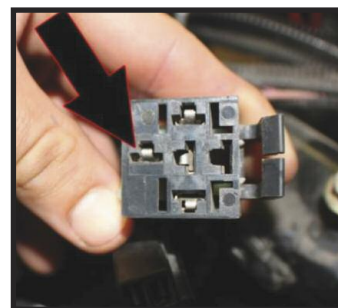


PHOTO 7: Plug

REFILL COOLANT:

Now you can refill the radiator and check for leaks. Start the machine and recheck coolant level, the kit will require approximately 1 additional quart of coolant. Allow the engine to warm up and circulate the coolant, it may take a few minutes before you get any heat out of the heater, and this is due to the air in the cooling system. Once you start getting good heat recheck coolant level and check again for leaks.