

HEATER UNIT AH302

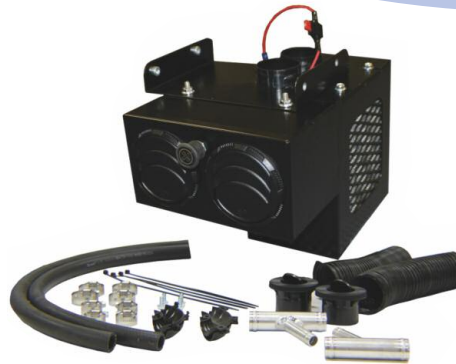
Cab heater kit for the 2010-2012 Polaris Ranger RZR 800 & RZR S800, RZR, RZR-S

FEATURES:

- 3 Speed Hi Output Blower
- 290 CFM Fan Draws 4 Amps
- 4 Fully Adjustable Louvers
- Powder coated Steel Case
- Motor has 4,000 hour Brush Life and 3 year warranty

INCLUDES:

- (1) Instructions
- (2) Y Splicers
- (4) 1" Hose Clamps
- (4) Zip Ties
- (1) $\frac{5}{8}$ " Heat Hose
- (4) $\frac{1}{4}$ " - 20 Bolts
- (4) $\frac{5}{8}$ " Hose Clamps



PRE-INSTALLATION:

Open the hood and remove the storage compartment, this will allow easy access for the installation. You will also need to drill two 1" holes in the firewall with a hole-saw to route the heater hose through. **SEE PHOTO 1 & PHOTO 2**, they are both about 1 $\frac{1}{2}$ " from the factory hole in the firewall.

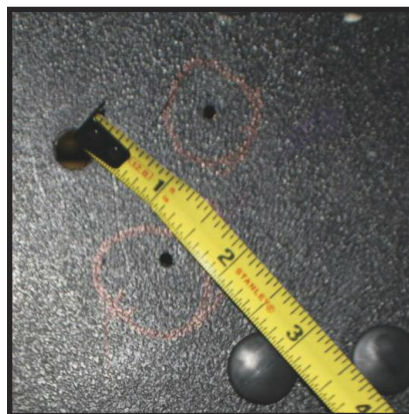


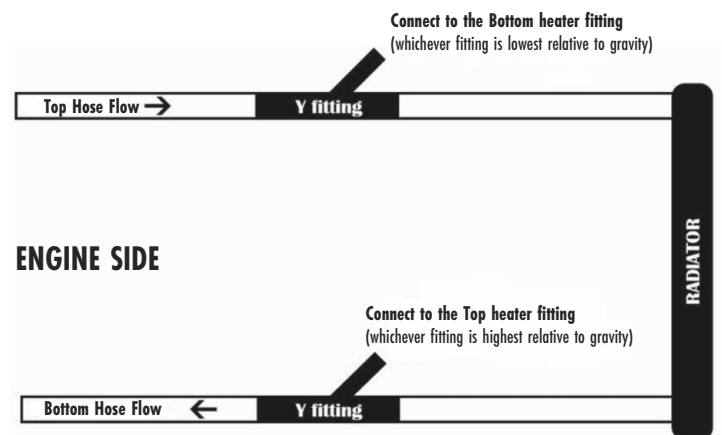
PHOTO 1: Hole



PHOTO 2: Hole

INSTALL THE Y-FITTINGS INTO THE RADIATOR LINES :

With the radiator drained or the radiator lines clamped off, you can now install the Y-Fittings into the lower and upper radiator hoses. You need to cut into the rubber radiator hose to put the Y-Fittings in place. Secure the Y-Fittings with the hose clamps provided. Make sure to install the Y-Fittings with the heater hose splices both opening up TOWARDS the radiator
See Y-Fitting Diagram.



Y-Fitting Diagram

INSTALL LOUVERS AND RUN DUCT:

You will need a 2" hole-saw for the louvers. We include cut-out diagrams for our recommended defrost locations, but if you wish to install in different locations you can do so. Just make sure to pre-measure and mark cutouts to assure they are level before drilling. After you drill the holes out insert the louvers in the openings **SEE PHOTO 3**. Now attach the duct hose to the louver adapters and secure with one of the zip ties provided. You can let these hang as you get ready to mount the heater.



PHOTO 3: Louvers and Duct

MOUNTING THE HEATER:

To start, attach the hose to the heater core fittings on the heater box. Once the hoses are secured to the heater core fittings the heater box can be installed. The heater hoses can be routed through the holes in the firewall. Carefully raise heater box and attach to the dash brace with the bolts provided in the kit and tighten. At this time attach the hanging duct to the heater box adapters.

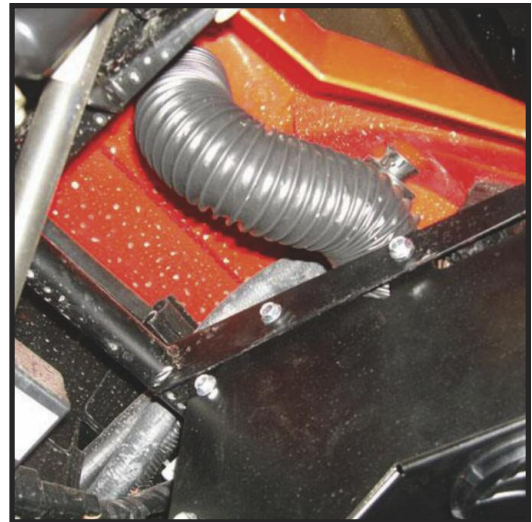


PHOTO 4: Mounting Heater

WIRING:

Attach the power wire to the auxiliary power supply.

REFILL COOLANT:

Now you can refill the radiator and check for leaks. Start the machine and allow the engine to warm up and circulate the coolant, run the machine once you start getting good heat. When done using, **make sure the radiator is cool** then recheck coolant level and fill if needed. It is possible you will need to run the machine and recheck fluid levels multiple times before working out all of the air and start to obtain good heat.